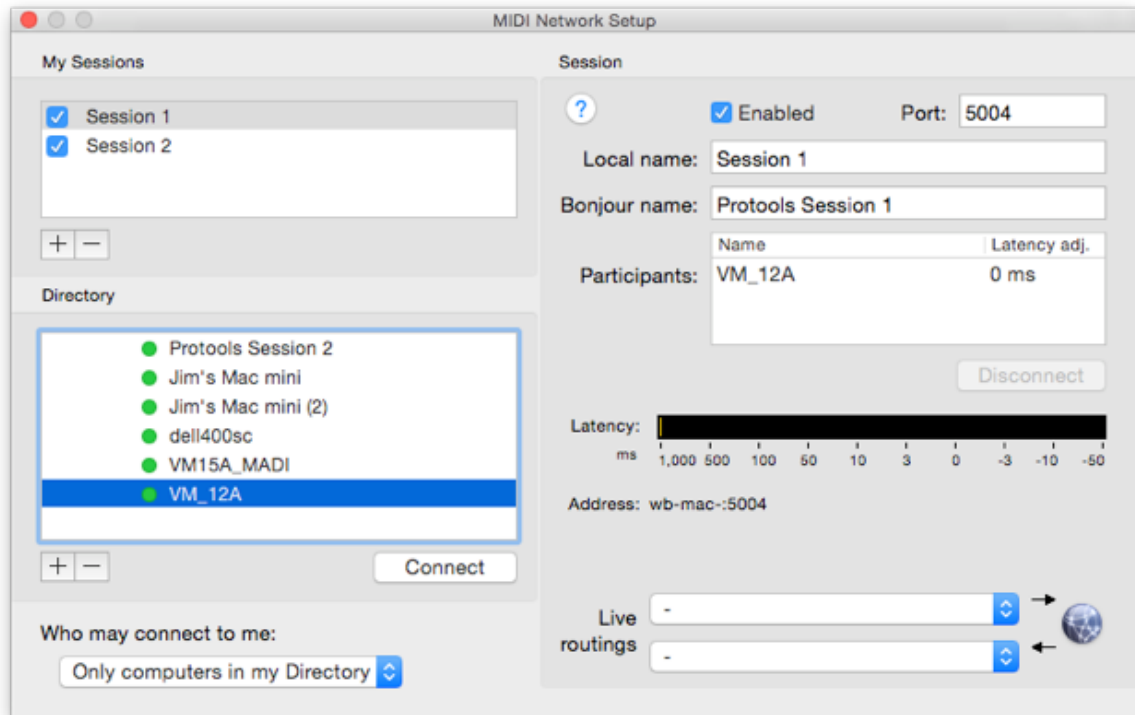


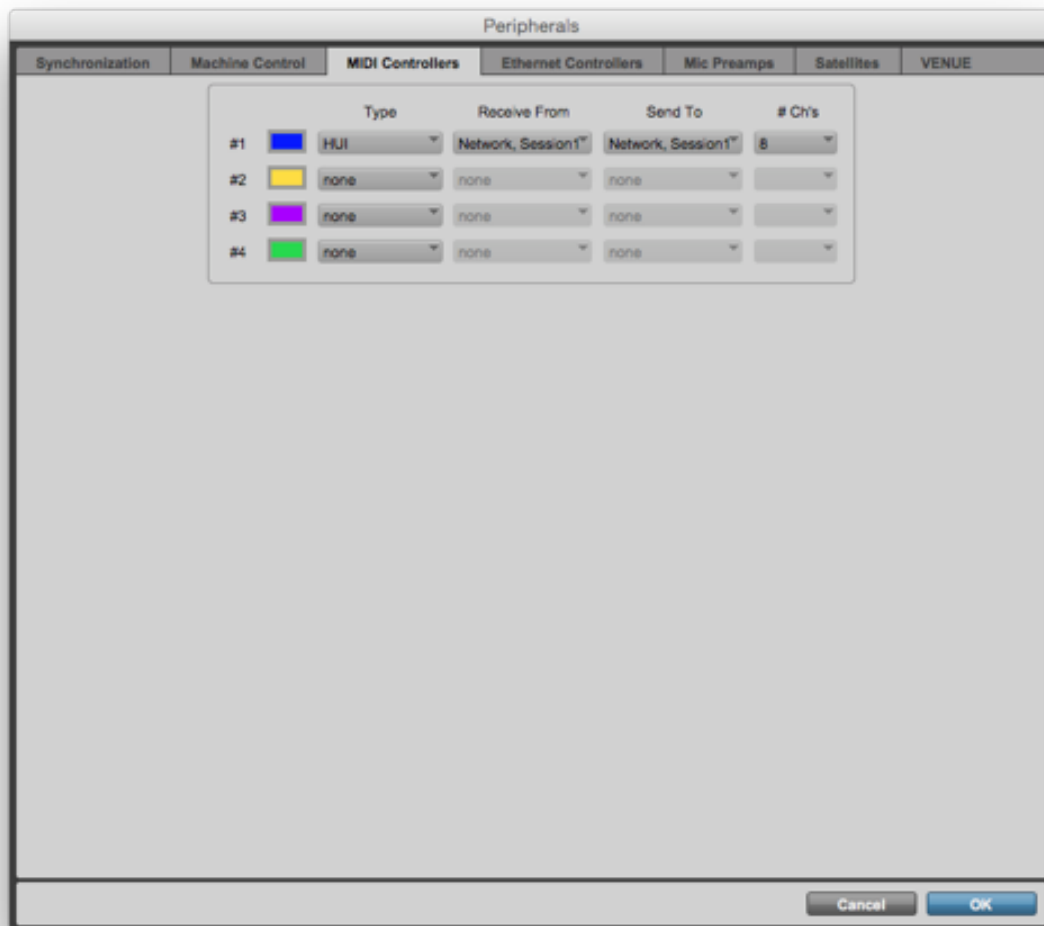
VM-12A/NETWORK MIDI QUICK START

The VM12A counter displays the HUI MIDI counter sent over network MIDI.

- 1) Connect the VM-12A to the same network as Protools.
- 1) In Protools/Setup/MIDI Studio, open the 'Network' window.
- 2) In 'My Sessions' add a Session window. Check it to enable it.
- 3) In 'Directory' select the VM_12A and press 'Connect'.



- 4) In Protools/Setup/Peripherals/MIDI Controllers, set up a HUI channel that goes to Session 1.



5) Put Protools in PLAY. It may take some seconds for the counter to display at first. To get it looking right you will have to toggle the Protools counter to some other format (ft/fr, bar/beat) then back to timecode. This is because Protools only sends changes so some of the fields are not filled.

If you have the VM-12A set up in network MIDI before you start Protools, the display will be correct the first time.

You will have to do the VM-12A network MIDI connection each time you boot the computer. It does not remember connections. Protools will remember the HUI connection, and network MIDI will remember that the sessions are enabled.

Contact us at jsketcham@earthlink.net if you have any questions. Ignore the spam blocker, I will get your message.